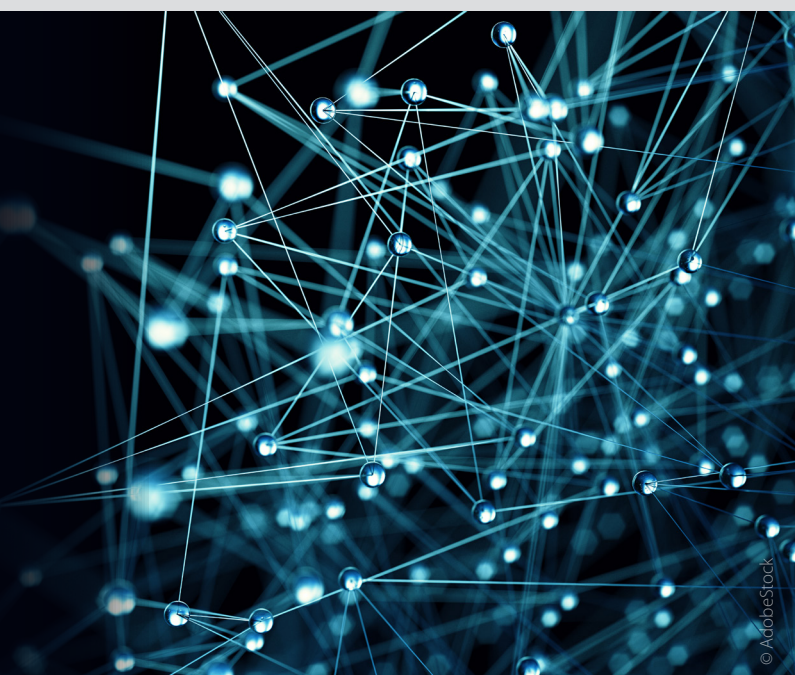


c't NETWORK-GUIDE

Selecting components, building and accelerating networks

c't Network-Guide provides guidance in the selection of current hardware, advises on purchasing and evaluation and supports with sound know-how during setup. In the router focus section, the magazine provides an overview of the latest accessories for Fritzboxes, methods for measuring throughput and shows how to upgrade inexpensive firewalls to the powerful OpenWrt and accelerate WLAN with Wi-Fi 7.

At the heart of the special issue are articles on upgrading to multigigabit Ethernet. No new cables need to be laid; all you need is an inexpensive multigigabit switch and our tried-and-tested handouts for selection and setup. Even older NAS devices that manufacturers did not design for multigigabit Ethernet at the time benefit from this fast infrastructure.



Fritzbox and router

- Current Fritzboxes in focus
- Accessories
- Performance measurement and optimization of Internet traffic
- Performance measurement and optimization of home network traffic
- Second-hand tip: Converting Sophos Firewall to OpenWrt
- OpenWrt routing practic

WiFi 7

- Affordable Wi-Fi 7 access points
- Wi-Fi 7 Mesh Kit
- Wi-Fi 7: Overview of the technology
- Wi-Fi 7: Basics

Multigigabit Ethernet

- Upgrading home networks
- Smart switches for fast networks
- Switch functions explained
- Fast switches: Test

Optimising NAS devices

- Introduction
- Hard drives for NAS
- RAM for NAS
- Synology remote backup
- FAQ: NAS
- NAS on your own

DATES

On sale

Aug 02, 2024

Space close

July 11, 2024

Materials

July 16, 2024

Size	Type area	Bleed* (w x h)	4c
2/1 page	390 x 201	420 x 240	€ 9,950
1/1 page	185 x 201	210 x 240	€ 4,990
Portrait size A	145 x 201	156 x 240	€ 4,025
Portrait size B	105 x 201	116 x 240	€ 2,865
Portrait size C	60 x 201	71 x 240	€ 2,010
1/2 page Landscape	185 x 98	210 x 115	€ 2,574
1/3 page Landscape	185 x 64	210 x 81	€ 1,716
1/4 page Landscape	185 x 48	210 x 65	€ 1,352
Cover page 2 and 4			€ 6,250
Cover page 3			€ 5,460

PRINT RUN: 23,000 COPIES

Magazine format: 210 x 240 mm
 Fixed placement: + 10 %,
 All rates plus VAT
 * Bleed: 3mm bleed margin

Contact

Verlagsbüro ID GmbH & Co. KG
 Jathostr. 10a
 30916 Isernhagen, Germany
 Phone: +49 [0]511 616595-0
 Fax.: +49 [0]511 616595-55
 E-mail: service@verlagsbuero-id.de
 Internet: www.verlagsbuero-id.de

Ines Walter (Ltg.): -25
Irmgard Ditgens: -10